



CIRCADIAN®
ZircLight™

DynamicBlu™ Spectrum Control
with Zirc™ NightSafe™ Technology



Less than 2%
blue light content
at night



1X4 LED TROFFER CSPT/CSM Series

CIRCADIAN AUTONOMOUS LIGHT FIXTURE

- The only true circadian solution that provides blue rich-light from dawn to dusk and less than 2% blue light content after sunset to maximize employee health, productivity, and safety.
- Zirc™ NightSafe™ Technology provides blue-depleted light after sunset to prevent circadian disruption which causes health risks such as diabetes, depression, obesity, and certain types of cancer.
- Intelligent DynamicBlu™ Spectrum Control System utilizes an astronomic clock pre-programmed for the life of the fixture to optimize the light spectrum over the 24-hour cycle adjusted for season and location.
- Evidence-based research using human subject testing in 24/7 simulation of 12-hour day and night shifts in our medical research facility.
- Optimal 24-hour color temperature in a preferred 3200k-4200k range for continuous white light with a smooth, imperceptible transition from Day to Night mode.
- Provides 500% less blue content than color tuning lights, even when they are dimmed to 2700k.
- Lumen output maintained over each 24-hour period and meeting specific industry work space illumination standards.
- Complementary Workforce Light Education Training to optimize the health, safety, and performance of the workforce.

Healthy Light for 24-Hour Optimal Health, Safety, and Performance DynamicBlu™ Spectrum Control with NightSafe™ Technology

CIRCADIAN ZircLight™ BENEFITS

- Manages exposure to blue content of white light
 - Increased alertness
 - Mood improvement
 - Avoids blue exposure at night
 - Boosts productivity

SURFACE MOUNT (CSM Series)



FIXTURE PERFORMANCE DATA*

| Nominal Lumen Output | Nominal Wattage | Average Luminaire Efficacy (lm/W) | CCT (k) | CRI | MAX WATTAGE |
|----------------------|-----------------|-----------------------------------|-----------|------|-------------|
| 1' X 4' UNIT | | | | | |
| 4000 | 33-63 | up to 92 | 3200-4200 | > 80 | up to 76 |

* based upon 24 hour duty cycle - 12 hour night, 12 hour day



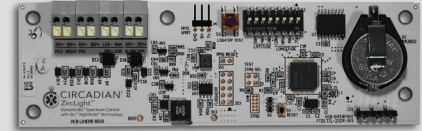
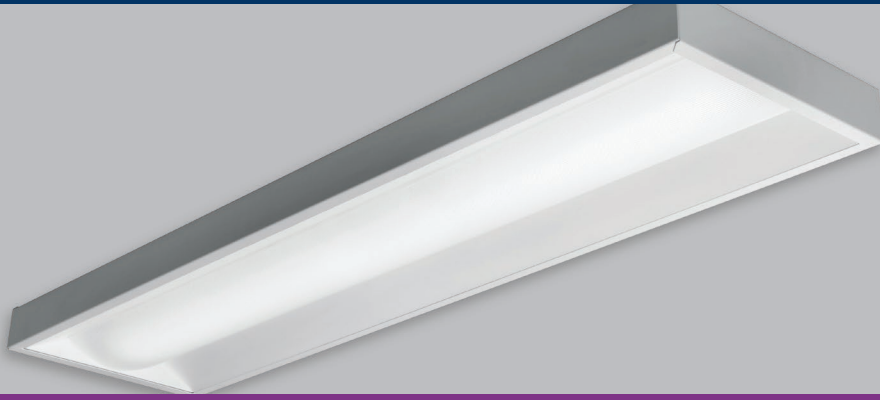
CIRCADIAN®
ZircLight™

DynamicBlu™ Spectrum Control
with Zirc™ NightSafe™ Technology

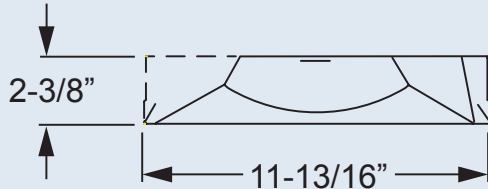
2 Main Street, Suite 310
Stoneham, MA 02180
www.circadianlight.com

Main: 781.439.6333 / info@circadianlight.com

1x4 LED TROFFER CSPT/CSM Series



CROSS SECTION



EXAMPLE

CSPT - 1 4 - L4000 / 835 - RA - OPTIONS - DIM - UNV - XX

▼ SERIES ▼ NOM NOM W. L ▼ 4000 ▼ CRI & CCT ▼ DIFFUSER ▼ CONTROLS ▼ DRIVER ▼ VOLTAGE ▼ ZONES

ORDERING INFORMATION

CIRCADIAN SERIES

CSPT Circadian Shallow Plenum Troffer
CSM Circadian Surface Mount

NOMINAL WIDTH

1 1'

NOMINAL LENGTH

4 4

LUMEN OUTPUT

| Lumen Package | Lumens | Wattage (nom/max) |
|---------------|--------|-------------------|
| L4000 | 4000 | 48/76 |

CRI & CCT

835 CRI > 80; CCT 3200 – 4200K; Spectrum modulates based on astronomical time.

DIFFUSER

RA Diffuse ribbed acrylic

OPTIONS

EQ CLIPS Earthquake clips (4 per fixture)

EM/10W Low-profile 10-watt emergency driver (120 277V only)

CP Chicago Plenum (CCEA)

CONTROL OPTIONS

0-10V Dimming controls are standard.

DIM Controls pre-wired for 0-10V low voltage dimming applications

VOLTAGE

UNV 120V-277V

347 347V (not available with EM option)

ZONE STATE/PROVINCE

- 01** QC
- 02** MN, ON-N
- 03** MB, MT, ND, SK
- 04** AB, BC, OR, WA
- 05** CT, DC, DE, MA, MD, ME, NC, NH, NJ, NY, ON-S, PA, RI, VA, VT, WV
- 06** IA, IL, IN, KS, KY, MI, MO, OH, OK, TN, WI
- 07** CO, NE, NM, SD, UT, WY
- 08** CA, ID, NV
- 09** FL, GA, SC
- 10** AL, AR, LA, MS, TX
- 11** AZ

SPECIFICATIONS

Optical Spectrum: Quality white light 24/7 with the precise wavelength spectrum, day and night, to optimize health and performance.

Optical Output: Nominal lumens 4000. Life rating exceeds 50,000 hours at L₇₀.

Color Characteristics: CRI > 80; CCT 3200 – 4200K; Spectrum modulates based on astronomical time.

Electrical: 48 - 76 watts dimmable to 10% (50% recommended) using standard 0-10V DC protocol. Universal input voltage range (120-277VAC) or 347VAC. Driver transient protection to NEMA SSL-2010. Non-roadway 2.5KV.

Construction: Heavy-duty C.R.S. construction. Matte white paint and frosted lens provide pleasing architectural aesthetics with non-glare reflective surfaces. Shallow housing depth (2 3/8") minimizes required plenum space.

Installation: For non-insulated standard 15/16" T-grid ceiling applications.

Weight: 12 pounds (5.4 kg)

Operating Temperature: 0°C - 40°C

Listings: Rated for dry indoor locations. UL1598 listed, FCC and RoHS compliant.

Warranty: Limited 5-year warranty

Enhanced Visual: Uniform ambient illumination. Ribbed lens for enhanced visual comfort.

FIXTURE DETAILS

