



Less than 2%  
blue light content  
at night



## 1X4 LED TROFFER CSPT/CSM Series

### CIRCADIAN AUTONOMOUS LIGHT FIXTURE

- The only true circadian solution that provides blue rich-light from dawn to dusk and less than 2% blue light content after sunset to maximize employee health, productivity, and safety.
- NightSafe™ Technology provides blue-depleted light after sunset to prevent circadian disruption which causes health risks such as diabetes, depression, obesity, and certain types of cancer.
- Intelligent DynamicBlu™ Spectrum Control System utilizes an astronomic clock pre-programmed for the life of the fixture to optimize the light spectrum over the 24-hour cycle adjusted for season and location.
- Evidence-based research using human subject testing in 24/7 simulation of 12-hour day and night shifts in our medical research facility.
- Optimal 24-hour color temperature in a preferred 3200k-4200k range for continuous white light with a smooth, imperceptible transition from Day to Night mode.
- Provides 500% less blue content than color tuning lights, even when they are dimmed to 2700k.
- Lumen output maintained over each 24-hour period and meeting specific industry work space illumination standards.
- Complementary Workforce Light Education Training to optimize the health, safety, and performance of the workforce.

## Healthy Light for 24-Hour Optimal Health, Safety, and Performance DynamicBlu™ Spectrum Control

### CIRCADIAN LIGHT BENEFITS

- Manages exposure to blue content of white light
  - Increased alertness
  - Mood improvement
  - Avoids blue exposure at night
  - Boosts productivity

### SURFACE MOUNT (CSM Series)

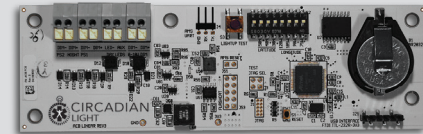
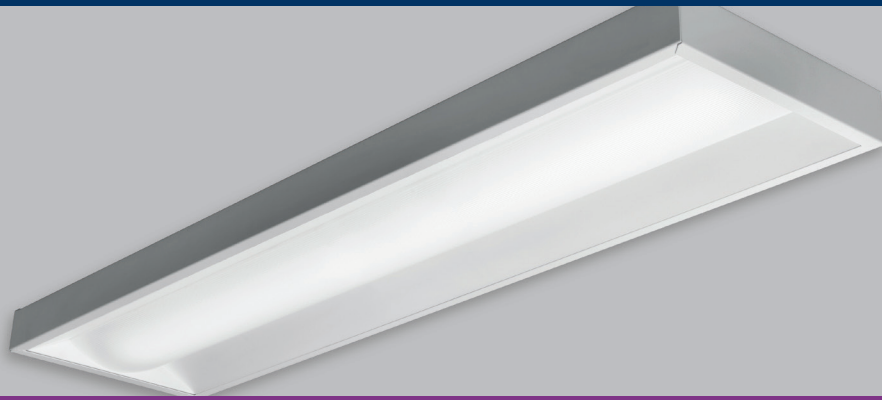


### FIXTURE PERFORMANCE DATA\*

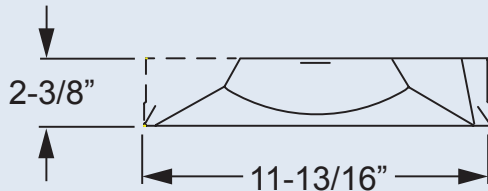
Nominal Lumen Output	Nominal Wattage	Average Luminaire Efficacy (lm/W)	CCT (k)	CRI	MAX WATTAGE
<b>1' X 4' UNIT</b>					
4000	33-63	up to 92	3200-4200	> 80	up to 76

\* based upon 24 hour duty cycle - 12 hour night, 12 hour day

# 1x4 LED TROFFER CSPT/CSM Series



## CROSS SECTION



### EXAMPLE

CSPT - 1 4 - L4000 / 835 - RA - OPTIONS - DIM - UNV - XX

SERIES   NOM NOM W. L   4000   CRI & CCT   DIFFUSER   CONTROLS   DRIVER   VOLTAGE   ZONES

## ORDERING INFORMATION

### CIRCADIAN SERIES

**CSPT** Circadian Shallow Plenum Troffer  
**CSM** Circadian Surface Mount

### NOMINAL WIDTH

1 1'

### NOMINAL LENGTH

4 4

### LUMEN OUTPUT

Lumen Package	Lumens	Wattage (nom/max)
L4000	4000	48/76

### CRI & CCT

**835** CRI > 80; CCT 3200 – 4200K; Spectrum modulates based on astronomical time.

### DIFFUSER

**RA** Diffuse ribbed acrylic

### OPTIONS

**EQ CLIPS** Earthquake clips (4 per fixture)

**EM/10W** Low-profile 10-watt emergency driver (120 277V only)

**CP** Chicago Plenum (CCEA)

### CONTROL OPTIONS

**0-10V** Dimming controls are standard.

**DIM** Controls pre-wired for 0-10V low voltage dimming applications

### VOLTAGE

**UNV** 120V-277V

**347** 347V (not available with EM option)

### ZONE STATE/PROVINCE

- 01** QC
- 02** MN, ON-N
- 03** MB, MT, ND, SK
- 04** AB, BC, OR, WA
- 05** CT, DC, DE, MA, MD, ME, NC, NH, NJ, NY, ON-S, PA, RI, VA, VT, WV
- 06** IA, IL, IN, KS, KY, MI, MO, OH, OK, TN, WI
- 07** CO, NE, NM, SD, UT, WY
- 08** CA, ID, NV
- 09** FL, GA, SC
- 10** AL, AR, LA, MS, TX
- 11** AZ

## SPECIFICATIONS

**Optical Spectrum:** Quality white light 24/7 with the precise wavelength spectrum, day and night, to optimize health and performance.

**Optical Output:** Nominal lumens 4000. Life rating exceeds 50,000 hours at L<sub>70</sub>.

**Color Characteristics:** CRI > 80; CCT 3200 – 4200K; Spectrum modulates based on astronomical time.

**Electrical:** 48 - 76 watts dimmable to 10% (50% recommended) using standard 0-10V DC protocol. Universal input voltage range (120-277VAC) or 347VAC. Driver transient protection to NEMA SSL-2010. Non-roadway 2.5KV.

**Construction:** Heavy-duty C.R.S. construction. Matte white paint and frosted lens provide pleasing architectural aesthetics with non-glare reflective surfaces. Shallow housing depth (2 3/8") minimizes required plenum space.

**Installation:** For non-insulated standard 15/16" T-grid ceiling applications.

**Weight:** 12 pounds (5.4 kg)

**Operating Temperature:** 0°C - 40°C

**Listings:** Rated for dry indoor locations. UL1598 listed, FCC and RoHS compliant.

**Warranty:** Limited 5-year warranty

**Enhanced Visual:** Uniform ambient illumination. Ribbed lens for enhanced visual comfort.

## FIXTURE DETAILS

